

QUALITY PRODUCTS

COOPER FLUID SYSTEMS OFFERS AN EXTENSIVE RANGE OF QUALITY HYDRAULIC, LUBRICATION AND FLUID HANDLING PRODUCTS AND SYSTEMS.

CFS Hydraulic & Pneumatic Rewind Hose Reels

The solid steel construction, minimal moving parts and high quality powder coated finish combine to establish the "Cooper Reel" as the market leader in heavy duty hose reels.

Features and Benefits Include:

- Safe to operate and maintain.
- No power springs.
- Direct drive - no chain.
- Less moving parts.
- No pawl.
- Stainless Steel hose guide.
- Greater hose carrying capacity.
- High flow with low pressure drop.
- Optional Brake Assembly (pneumatic only).

Special Reels:

- Customer specified colour paint.
- Custom designed hose guides.
- Stainless Steel hub and swivel.



Hose Reel Stand



PB693
Air Brake Assembly



HR-05-026
Swivel Arm



688808
Manifold

ENERPAC 

LINCOLN



SMC



macnaught

EAT•N

Aeroquip

AUSTRALIA'S HYDRALUIC & LUBRICATION SPECIALISTS

www.cooperfluidsystems.com.au

**PERTH
MACKAY**

**KALGOORLIE
TOWNSVILLE**

**ADELAIDE
NEWMAN**

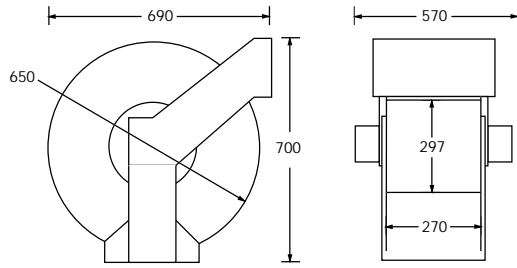
**BRISBANE
HUNTER VALLEY**

**GLADSTONE
MT ISA**

1300 026 673

A Division of Coventry Group Ltd ABN 37 008 670 102

Hydraulic High Volume Rewind Hose Reel



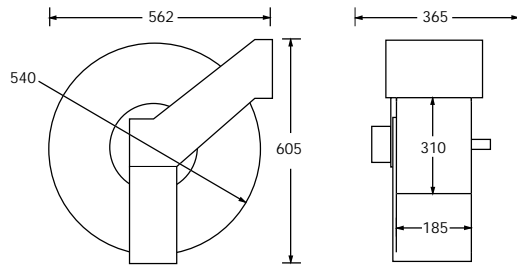
HRD392

PHPVBB6PSMRY

PHPV

Max. Rewind Hyd. Pressure.....	1000psi, 6.95Mpa
Max. Dispensing Pressure.....	300psi, 2.07Mpa
Inlet Port.....	1-1/2" NPT (F)
Outlet Port.....	1-1/2" NPT (F)
Reel Capacity.....	20m x 50mm OD Hose (based on control rewind feed)
Bearing Mounted.....	Low Friction
Hose Guide.....	Stainless Steel
Viton seals	
Three (3) moving parts	

Hydraulic Rewind Hose Reels



/9. PHPV HZ

HRO991-3/4" /9 6 1 HRO991SS*

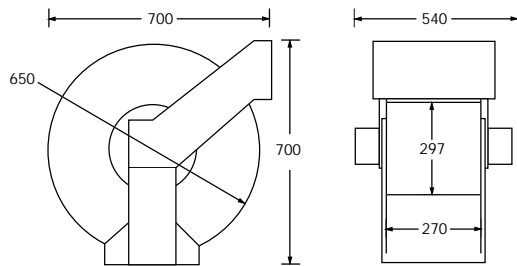
/9: # PHPVPSMRY

* Stainless Steel Hub #HVBS

PHPV

Max. Rewind Hyd. Pressure.....	1000psi, 6.9Mpa
Max. Dispensing Pressure.....	3000psi, 20.69Mpa
Max. Dispensing Pressure (grease).....	5000psi, 34.48Mpa
Inlet Port.....	Oil - 3/4" / 1" (NPT (F)) Grease - 1/2" NPT (M)
Outlet Port.....	Oil - 3/4" / 1" (NPT (F)) Grease - 3/4" NPT (F)
Reel Capacity.....	35m x 28mm OD Hose (based on control rewind feed)
Bearing Mounted.....	Low Friction
Hose Guide.....	Stainless Steel

Pneumatic High Volume Rewind Hose Reel



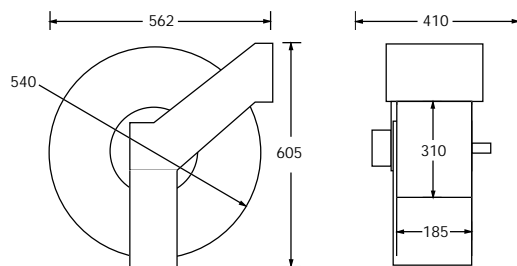
PRD493

PHPVBB6PSMRY

PHPV

Max. Rewind Air Pressure.....	100psi, 0.69Mpa
Max. Dispensing Pressure.....	300psi, 2.07Mpa
Inlet Port.....	1-1/2" NPT (F)
Outlet Port.....	1-1/2" NPT (F)
Reel Capacity.....	20m x 50mm OD Hose (based on control rewind feed)
Bearing Mounted.....	Low Friction
Hose Guide.....	Stainless Steel
Viton seals	
Three (3) moving parts	

Pneumatic Rewind Hose Reels



9. PHPV HZ

96 PRO446SS*

PHPVPSMRY

* Stainless Steel Hub

PHPV

Max. Rewind Air Pressure.....	100psi, 0.69Mpa
Max. Dispensing Pressure.....	3000psi, 20.69Mpa
Max. Dispensing Pressure (grease).....	5000psi, 34.48Mpa
Inlet Port.....	Oil - 3/4" (NPT (F)) Grease - 1/2" NPT (M)
Outlet Port.....	Oil - 3/4" (NPT (F)) Grease - 3/4" NPT (F)
Reel Capacity.....	35m x 28mm OD Hose (based on control rewind feed)
Bearing Mounted.....	Low Friction
Hose Guide.....	Stainless Steel

NOTE:

(P) (L) (S) (K) (K) (N) (H) (K) (M) (P) (Y) (V) (V) (M) (B) (V) (M) (S)

Installation considered to prevent ingress of water through air motor exhaust port.